

The background of the slide is a photograph of the Welsh flag, known as Y Ddraig Goch (The Red Dragon). The flag is white with a large red dragon in the center, breathing fire. The dragon's body is red, and its wings and tail are also red. The flag is flying on a flagpole against a clear blue sky.

Update from Wales

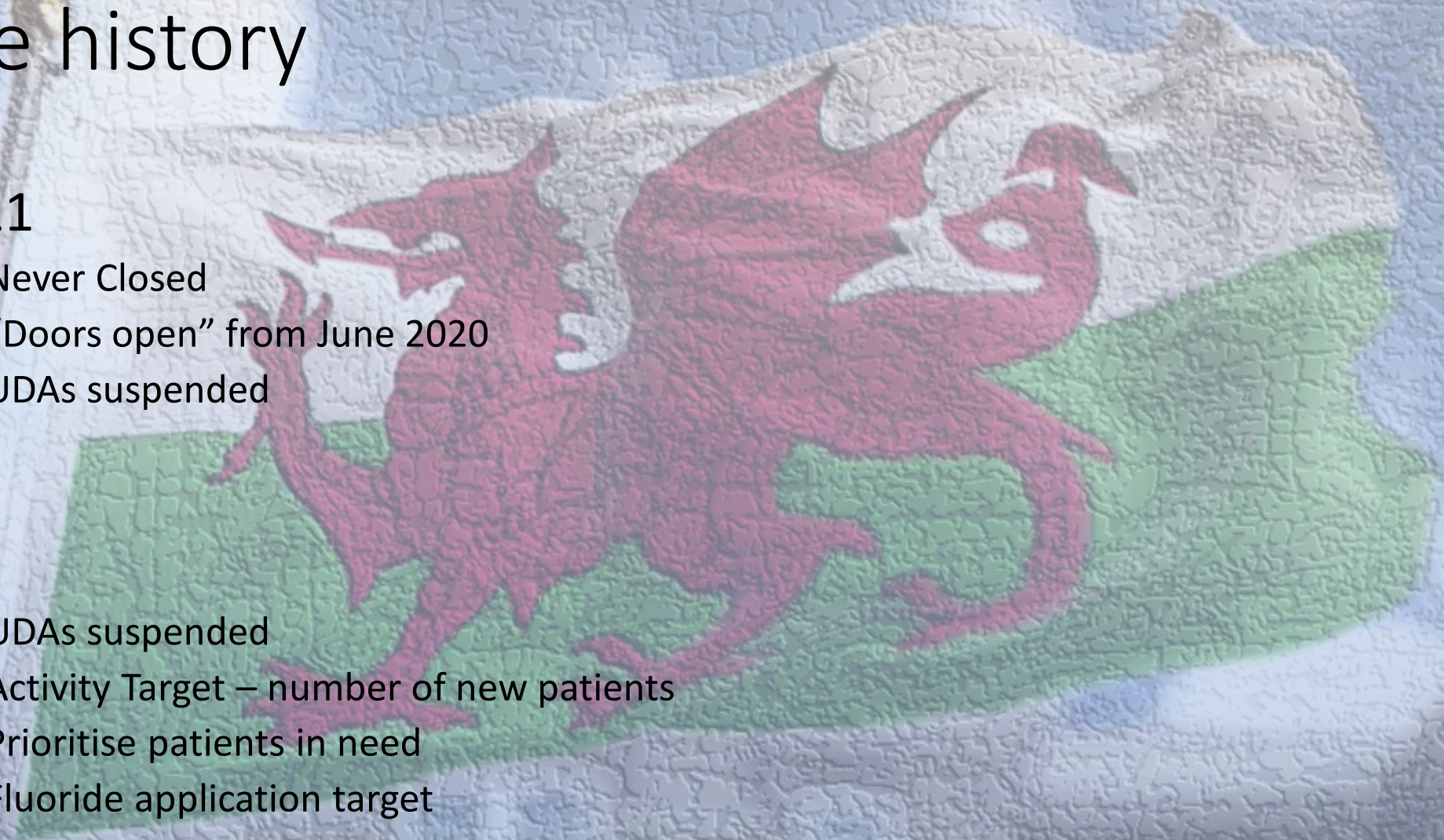
2023/24

Russell Gidney

Chair Welsh General Dental Practice Committee

A little history

- 2020/21
 - Never Closed
 - “Doors open” from June 2020
 - UDAs suspended
- 21/22
 - UDAs suspended
 - Activity Target – number of new patients
 - Prioritise patients in need
 - Fluoride application target



22/23

EITHER

- Return to UDAs

- Target negotiated 95%
- No further allowance for COVID

- Contract Reform

- Historic patient target (40%)
- New patient target (25%)
- Fluoride application target (5%)
- Extended recall target (5%)
- Nominal UDA target (25%)

22/23 Contract reform

- Historic patient numbers averaged across all practices
 - Reduced by 30% “to allow for new patient and admin”
 - New patients added back on
- Gives 84% target patient numbers pre COVID
 - Extending up to over 100% pt numbers
 - No allowance for prevention/increased need/ACORN
- Activity around 70% pre COVID
- Practice performance still unknown (June 23)

23/24

- Tweaks to CR targets
- Numbers (as yet unknown) choosing to return to UDAs
- **NEW CONTRACT NEGOTIATION**
 - Initial timeline for April 24

