



Humber and North Yorkshire
Health and Care Partnership



**Humber and
North Yorkshire**
Integrated Care Board (ICB)

Art of the Possible

Reflections from an ICB

Amanda Bloor, Deputy Chief Executive and Chief Operating Officer

Jack Lewis FFPH, Consultant in Public Health



What are Integrated Care Boards and why does it matter?

Key aims

- Improve on outcomes in both population health AND healthcare
- Tackle inequalities (outcomes, experience, and access)
- Improve productivity and value for money
- Support broader social/economic development through the NHS



Why the change?

- Need to think at scale
- Reduce fragmentation.
- Avoid duplication.
- Move away from single disease/organ approach.
- Tackle complexity and “wicked issues” across health and care.

Our strategy on a page

Our ambition is:

for everyone in our population to live longer, healthier lives

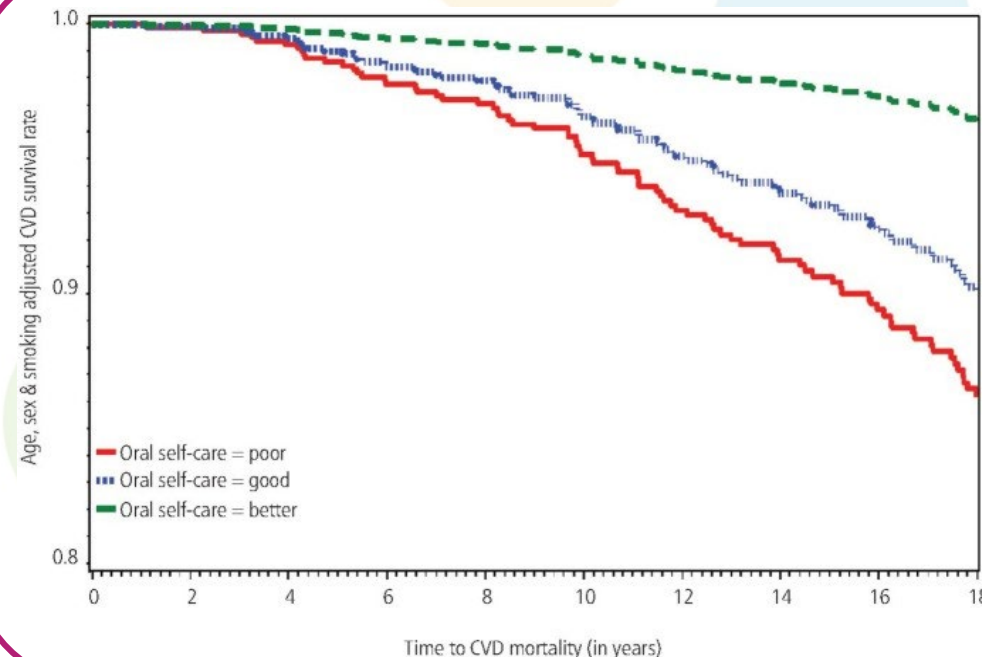
by narrowing the gap in healthy life expectancy between the highest and lowest levels in our communities by 2030 and increasing healthy life expectancy by five years by 2035.

Research:

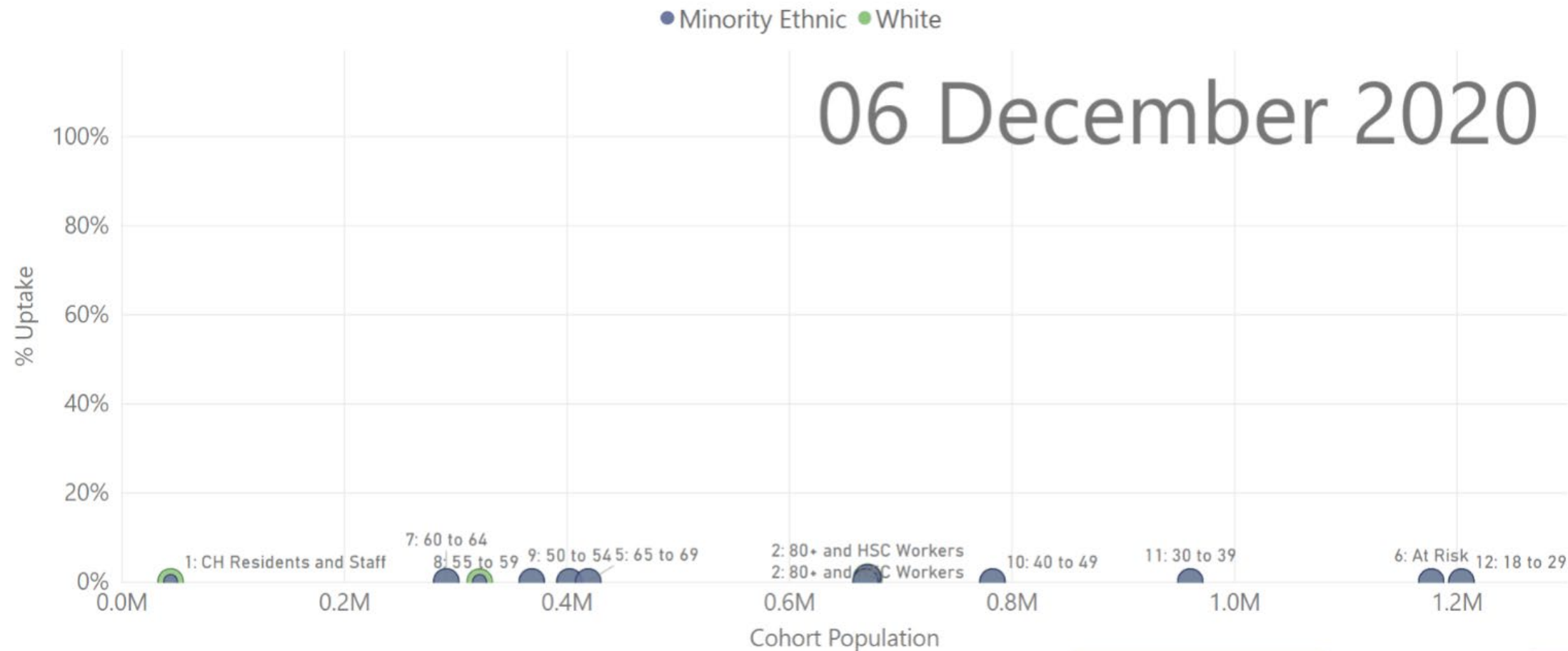
Oral hygiene, mouthwash usage and cardiovascular mortality during 18.8 years of follow-up

Sok-Ja Janket, Caitlyn Lee, Markku Surakka, Tejasvini G. Jangam, Thomas E. Van Dyke, Alison E. Baird and Jukka H. Meurman

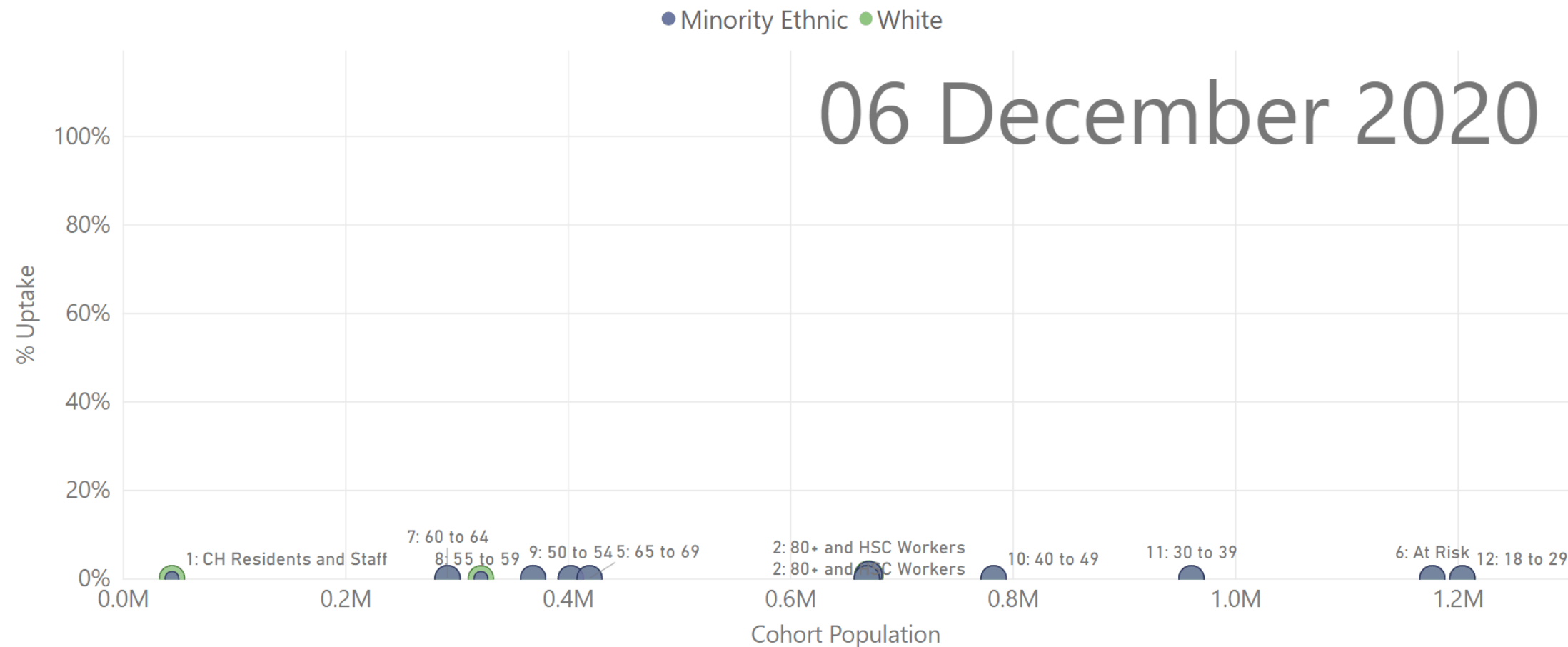
https://www.nature.com/articles/s41415-023-5507-4?utm_source=twitter&utm_medium=social&utm_campaign=CONR_BDJL_ENGM_UK_MPSS_POSTS_EDITORIAL&utm_content=200223



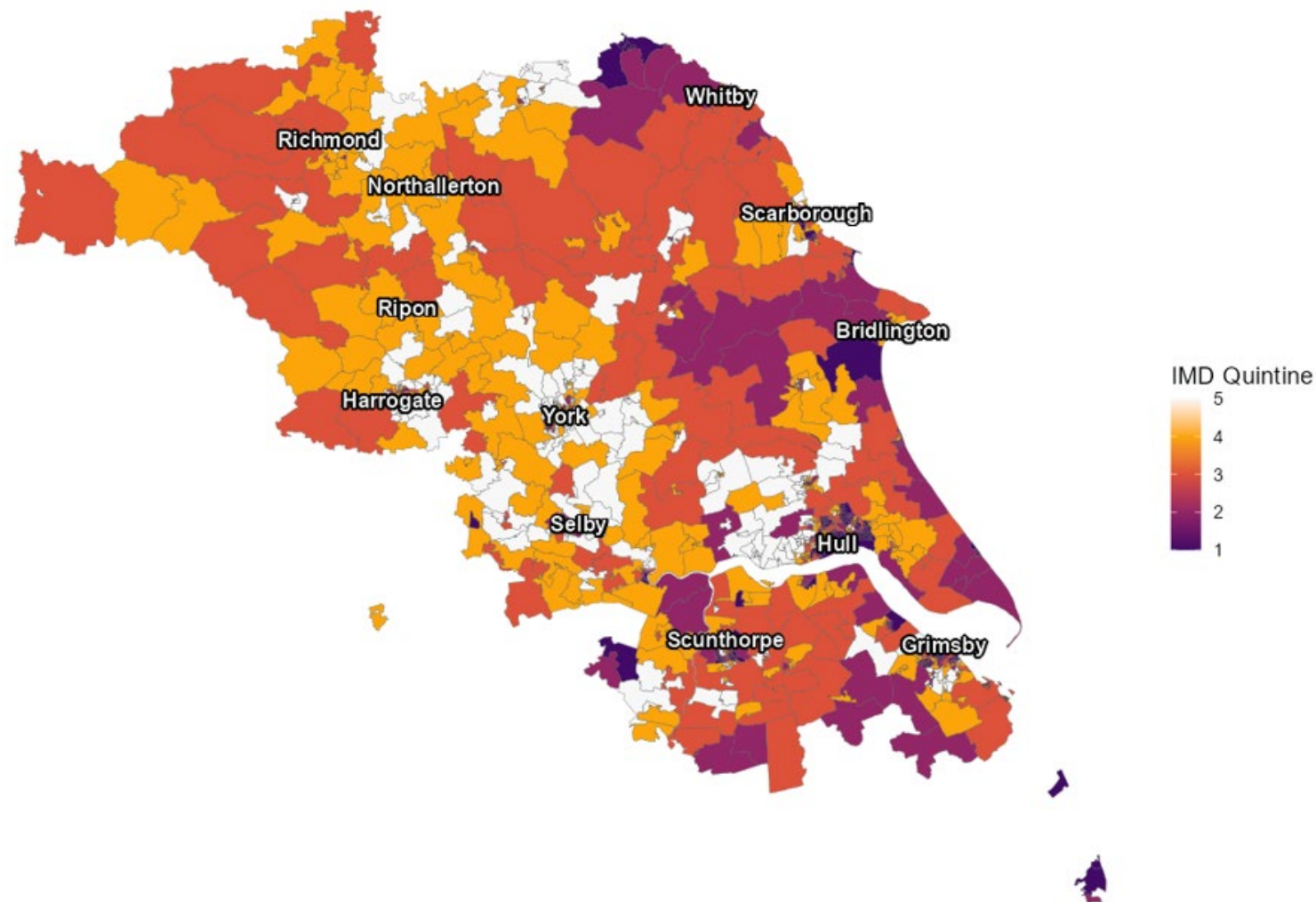
A Covid Story



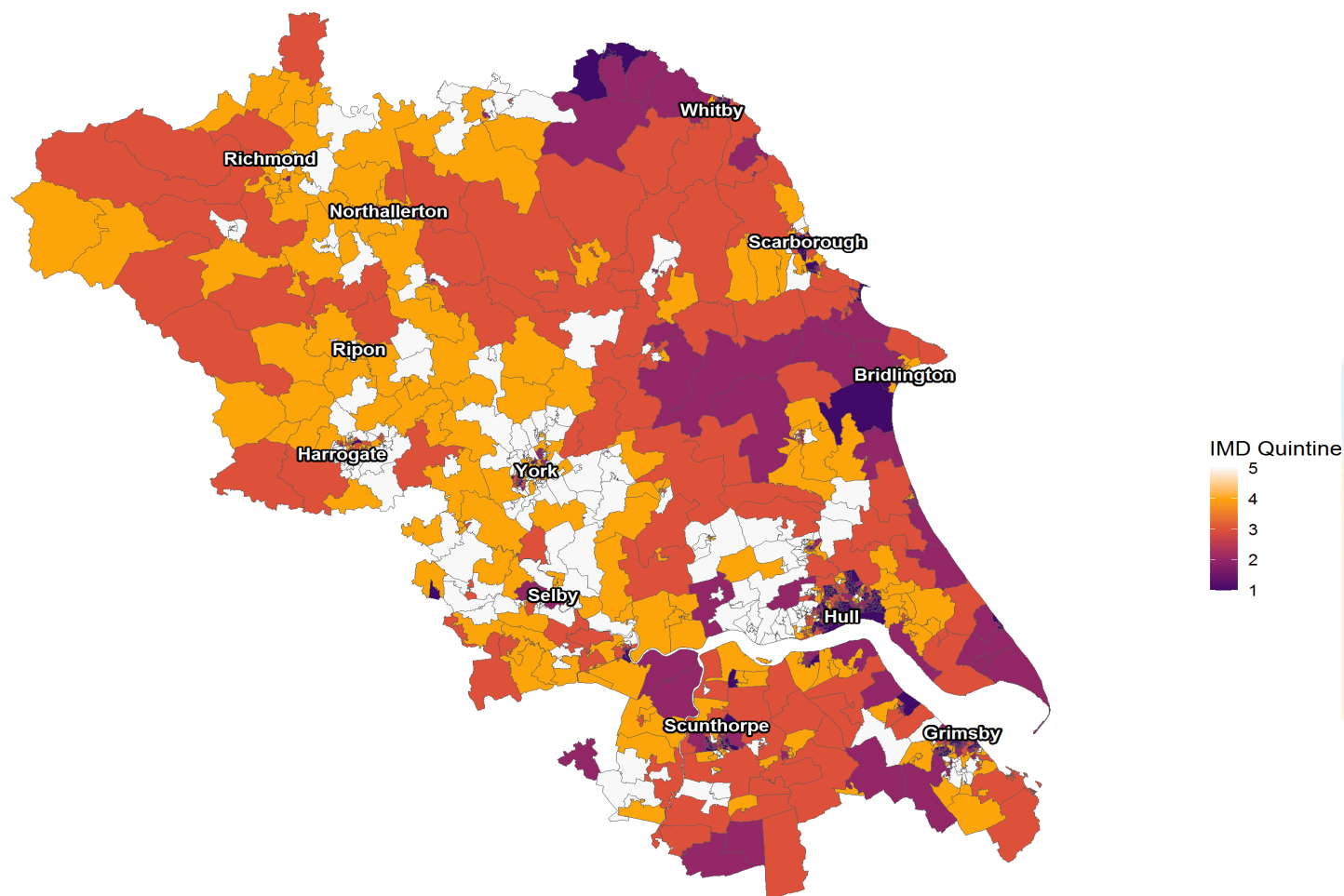
A Covid Story



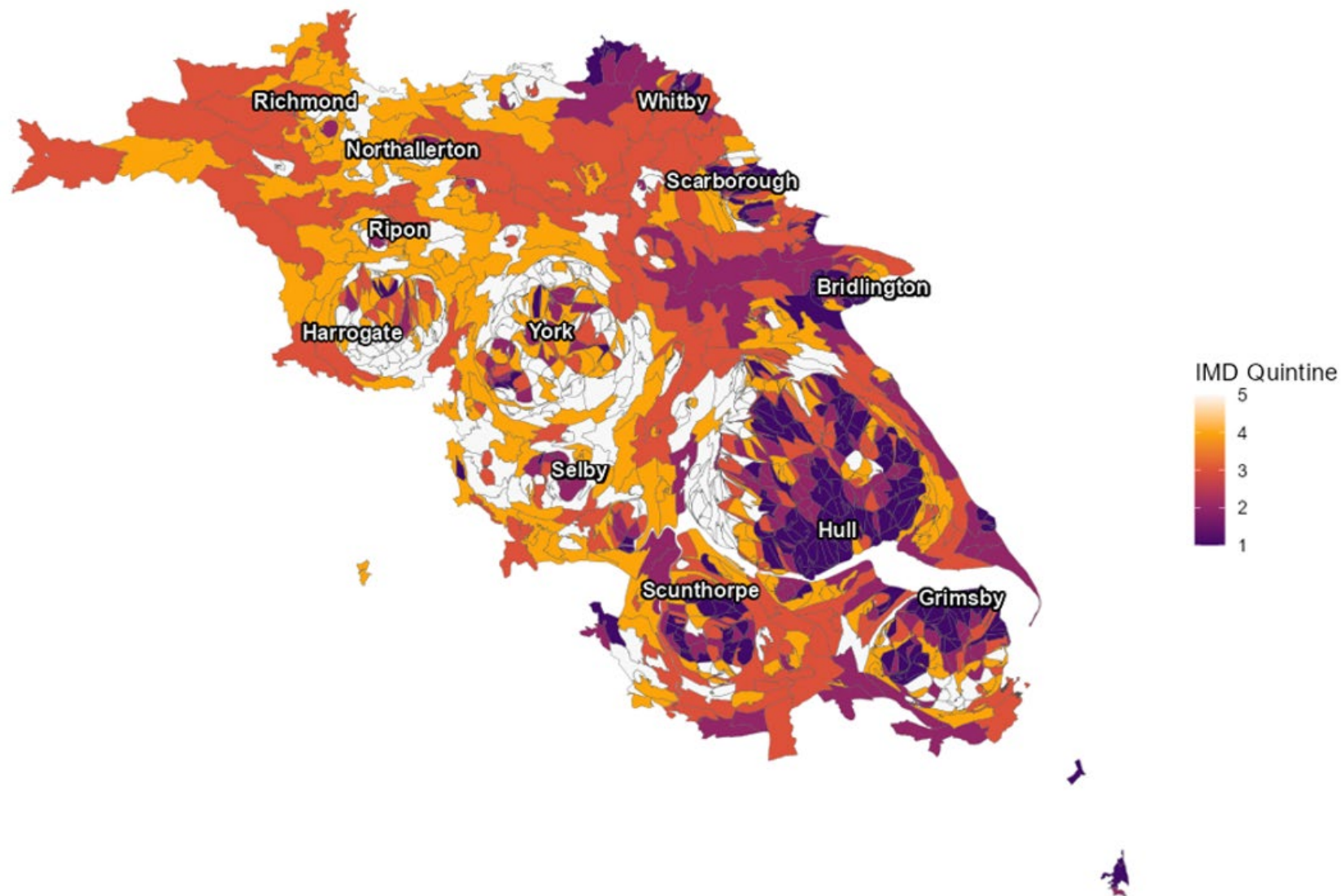
Lesson One: Intelligence-led decisions



The Real Humber and North Yorkshire



The Real Humber and North Yorkshire



Lesson Two: Move fast, but leave no-one behind





Lesson Three: Partnerships Matter

175 Dental Practices

325 Community Pharmacies

162 Community Optometry
Practices

43 Primary Care Networks
(168 GP Practices)

6 Local Authorities
(upper tier and unitary
authorities)

4 acute hospital trusts
(operating across 9 sites)

2 ambulance trusts

4 mental health trusts

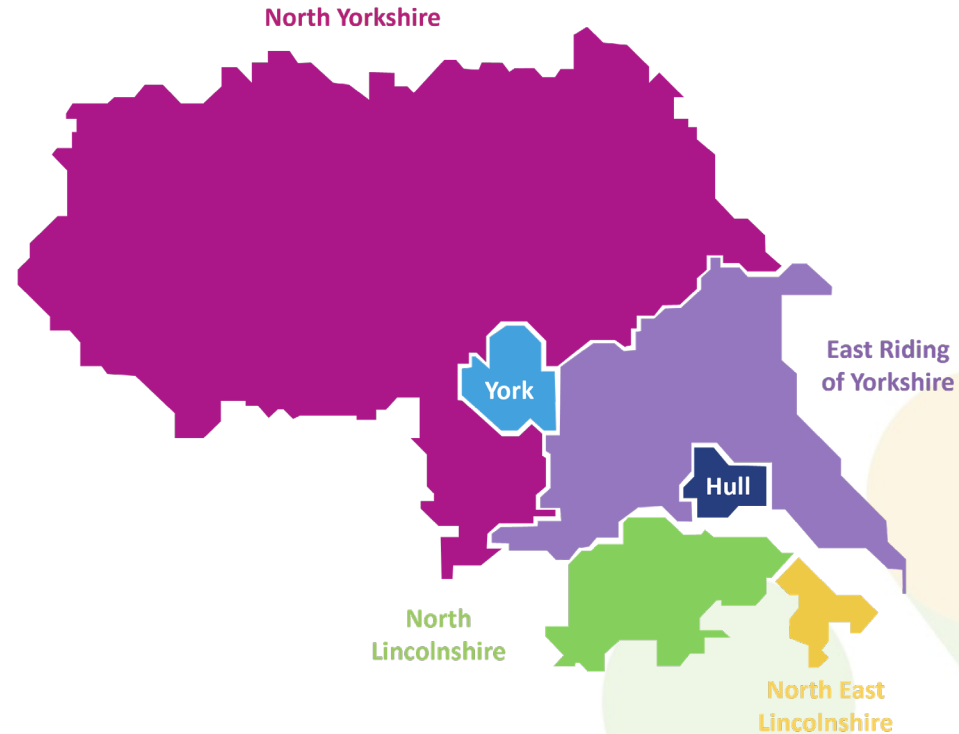
4 community / not for profit
providers

550 care homes

180 home care companies

10 hospices

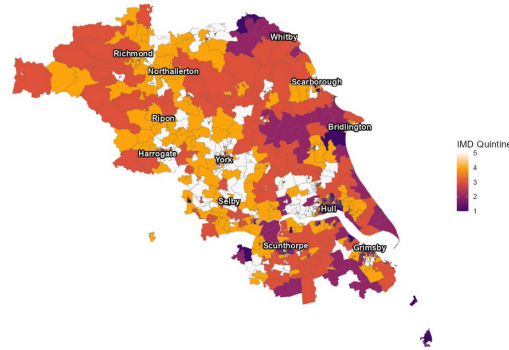
1000s of voluntary and
community sector organisations



Applying the lessons to dental

Lesson 1 – Data:

- Digital integration
- Epidemiology



Lesson 2 – Move fast, but leave no-one behind:

- Workforce
- UEC
- Inclusion Health



Lesson 3 – Partnership matters:

- Care Homes
- Primary Care
- Fluoridation



Our ambition – what are we doing now

- Engaging actively with LDC colleagues across Yorkshire and the Humber
- Explore flexibility within the contract
- Address the issues:
 - Prospectively use the clawback
 - Sessional commissioning
 - Target need and prevention
- Workforce plan

Our approach – a takeaway message

- Build relationships - because they really matter
- Focus on population need
- Co-create the solutions that work for you
- Be innovative – working within the contract