

***Can devolution improve  
dental care  
or are they taking  
the ‘N’ out of the NHS?***



**8<sup>th</sup> June 2018**

# *Greater Manchester Devolution and Dental Services*

**Ben Squires**

**Head of Primary Care Operations**



## **GM Devolution ambition**

- To ensure the greatest and fastest possible improvement to the health and wellbeing of the 2.8 million citizens of Greater Manchester

## **GM Devolution ambition**

- To ensure the greatest and fastest possible improvement to the health and wellbeing of the 2.8 million citizens of Greater Manchester

## **Mayoral Manifesto**

- We will raise awareness of the importance of children's oral health, promote new schemes in nurseries and schools and aim to reduce the number of child tooth extractions – which cost our NHS millions every year.

# Principles that guide the NHS

1. The NHS provides a comprehensive service, available to all
2. Access to NHS services is based on clinical need, not an individual's ability to pay
3. The NHS aspires to the highest standards of excellence and professionalism
4. The patient will be at the heart of everything the NHS does
5. *The NHS works across organisational boundaries*
6. The NHS is committed to providing best value for taxpayers' money
7. The NHS is accountable to the public, communities and patients that it serves

## Oral Health Programmes

- WHERE DOES THE MONEY SIT?
- WHAT MAKES MOST SENSE
  - WHO BENEFITS?
  - LET'S MAKE IT HAPPEN

# Children's Oral Health Programme

## HEALTH & SOCIAL CARE

- Through GM Partnership able to co-ordinate and deliver a consistent, evidence-based oral health improvement programme in 4 priority areas (Salford, Oldham, Rochdale & Bolton). Learning and future delivery intended to be GM-wide
- Working collaboratively with Health Visitor teams, Early Years settings and dental services.
- Delivering consistent oral health education, distributing toothbrushes and paste, delivering supervised toothbrushing and quality dental access with fluoride interventions

# **Dental Contributions to wider health and wellbeing**

## **Oral Health as key stage in pathways**

Diabetes Pathway – periodontal care

Cancer -

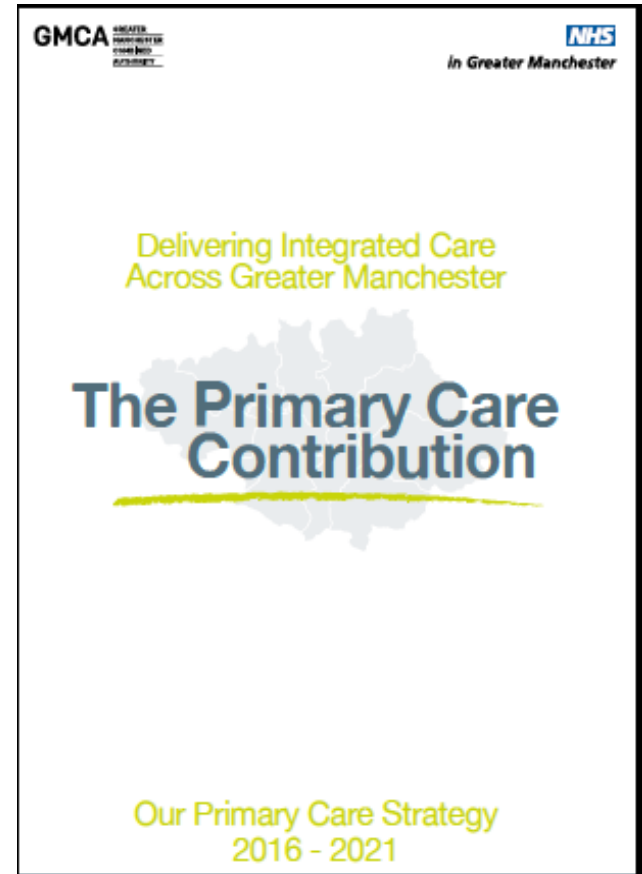
Frailty

Older People's / Dependent Living wellbeing – working collaboratively  
with the GM Federation of Local Dental Committees



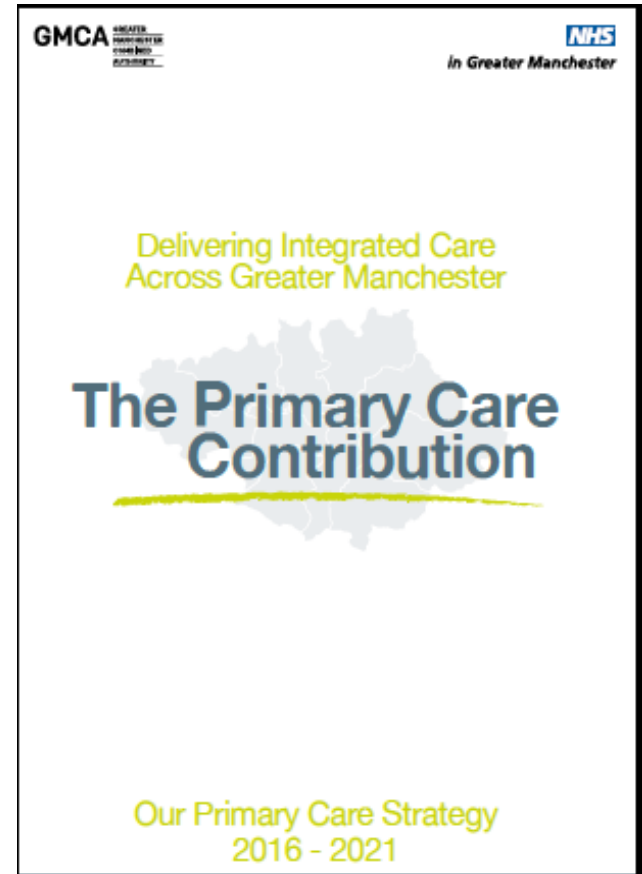
# The Greater Manchester Primary Care Strategy

Primary Care is now increasingly viewed as a core component of an integrated, community based, care system rather than a separate stand-alone entity.



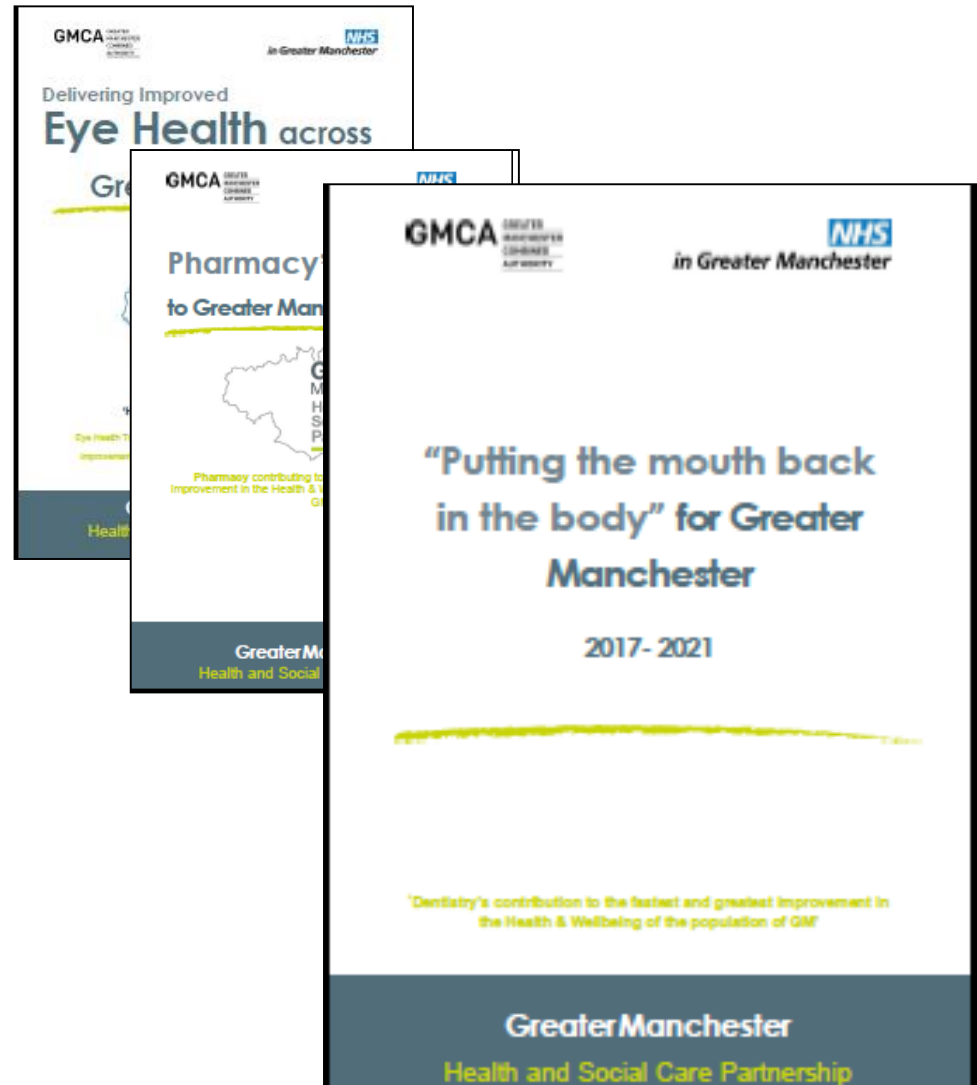
# The Greater Manchester Primary Care Strategy

Primary Care is now increasingly viewed as the core component of an integrated, community based, care system rather than a separate stand-alone entity.



# Involvement of wider Primary Care

It is recognised that primary care practitioners have a critical role to play in delivering short, medium and long-term interventions to improve the health of local people. Whether by finding and treating the right patients, building resilience and enabling recovery in particular patient groups, or enabling the best start in life for all, primary care must contribute to the reduction of preventable demand.



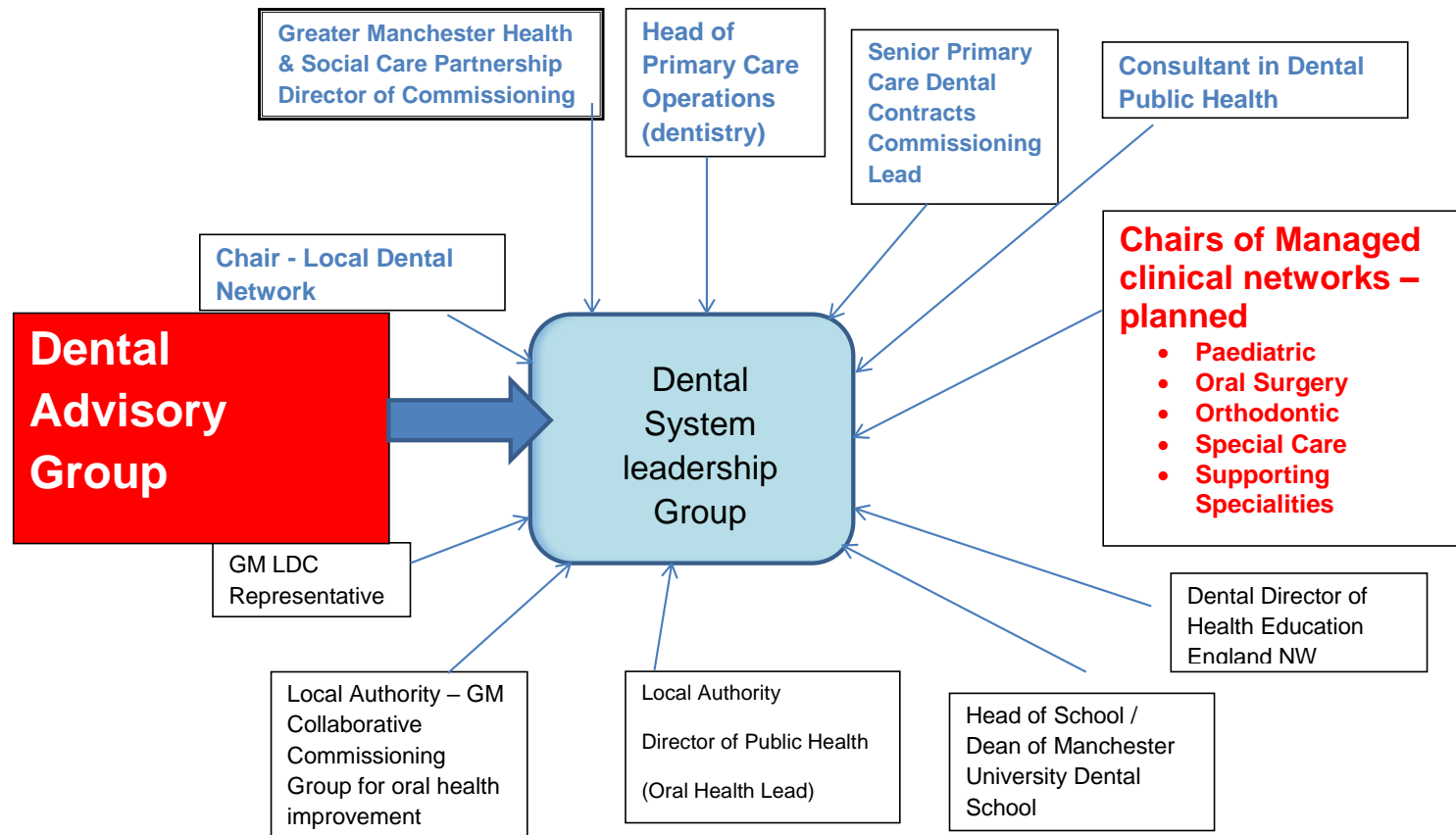
## **Dentists supporting Dentists Developing Quality Toolkits and Supporting Implementation**

- Baby Teeth DO Matter – Managing young children
- Healthy Gums DO Matter – Periodontal Toolkit
- Medical Histories DO Matter – Clinical Records
- Saving Smiles – Trauma Toolkit
- Healthy Living Dentistry Framework
- Dementia Friendly Dentistry (thanks to Cheshire & Merseyside)
  
- Older People's / Dependent Living wellbeing – working collaboratively with the GM Federation of Local Dental Committees

# Dental System Leadership Group

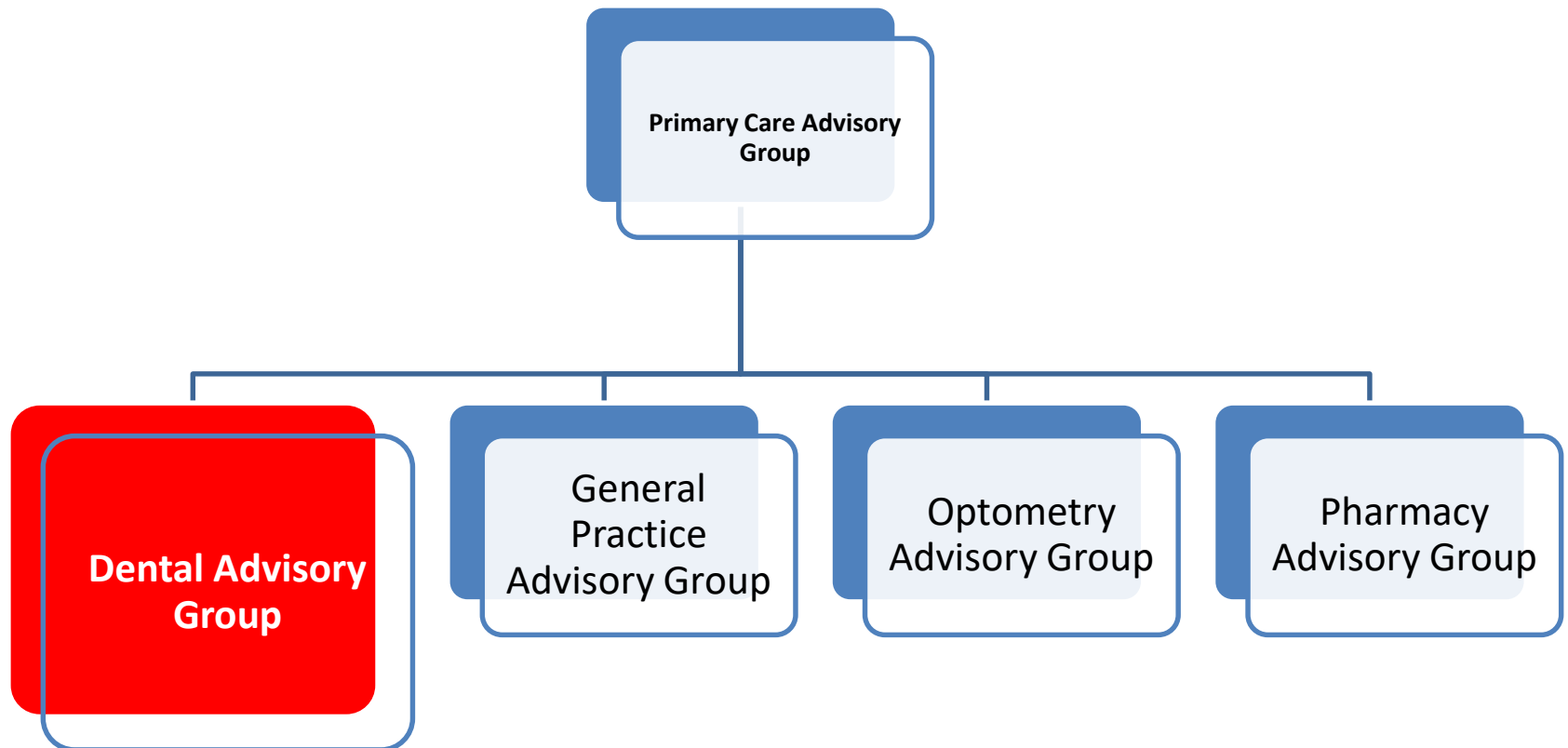
Dental Advisory Group is sub group of Primary Care Advisory Group

Dental System Leadership Group reports to Joint Strategic Commissioning regarding specialist, secondary and acute care



# Primary Care representation

**PRIMARY CARE ADVISORY GROUP = Unified Primary Care Voice**



# GM Governance

